



CDOT Barcode

Where 2D codes Cannot Go, Tracking Trillions of Industrial Parts

About CDOT Barcode

CDOT barcode is an AI-Powered, industrial-grade 2D code designed for the toughest environments, ensuring unmatched durability and data integrity in real time.

CDOT provides real-time visibility across all production stages, ensuring precise quality control and operational efficiency.

Direct benefits for clients: reduces production downtime, prevents production errors early, lowers scrap rates, and maximizes quality precision.

Core Technology Patent



UNITED STATES
PATENT AND
TRADEMARK
OFFICE

PRIORITY NUMBER
US202217704013

CDOT Barcode Features

- Size vs. Capacity
- Shape
- **Occlusion Resilience**
- **Hot Surface Durability**
- Stretch Tolerance
- **Coating/Painting Durability**
- **Heat Treatment Resistance**
- Sandblasting Resistance
- Small-Space Compatibility

Holds 192 bits / 32 alphanumeric characters for a 5mm² code

Flexible; square, rectangular, logo, or freeform

Decodable at 90% blockage

Withstands surface temperatures up to 700°C / 1292°F

Withstands stretching up to 3 times its original size

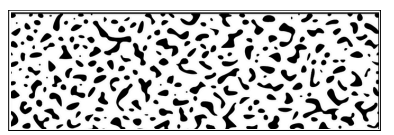
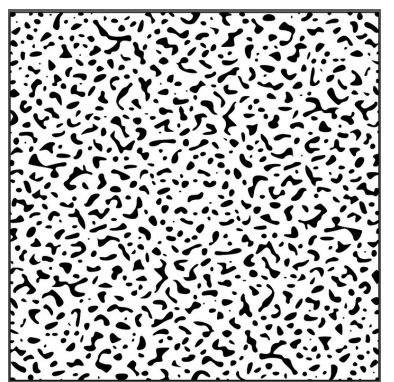
Withstands coating or painting up to 700µm

Withstands heating and furnacing up to 700°C / 1292°F

Between 50µm and 100µm (based on laser marker wattage)

Yes

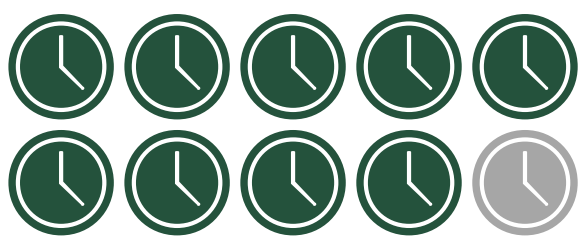
CDOT Barcode



CDOT Barcode

Quick Setup and Minimal Maintenance

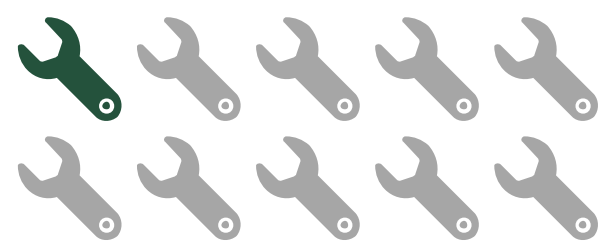
Installation Speed



9 of 10

Integrates with existing systems with no workflow changes required.

Maintenance

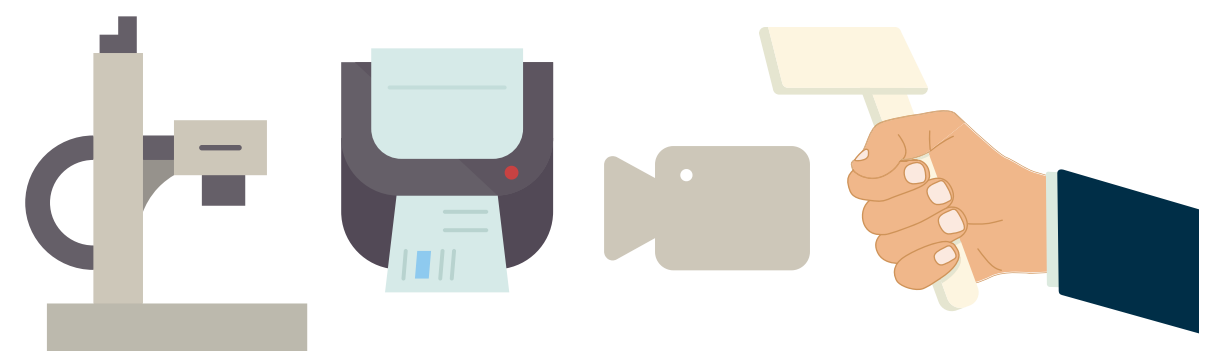


1 of 10

Resilient design requires minimal upkeep, even in abrasive environments.

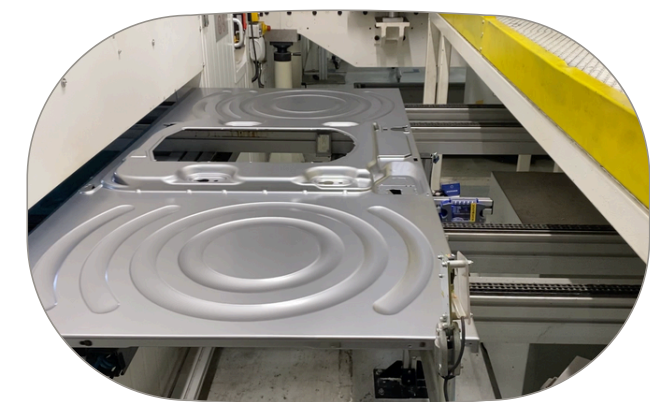
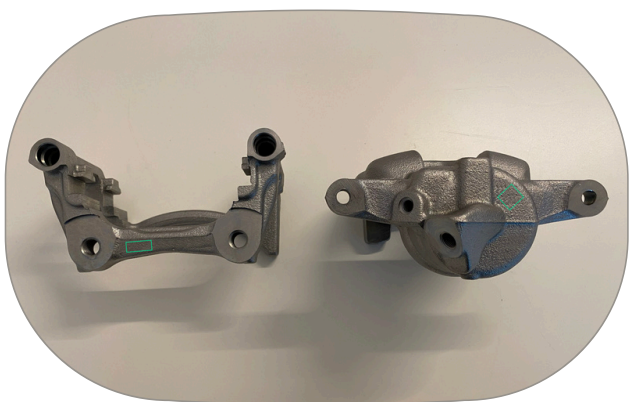
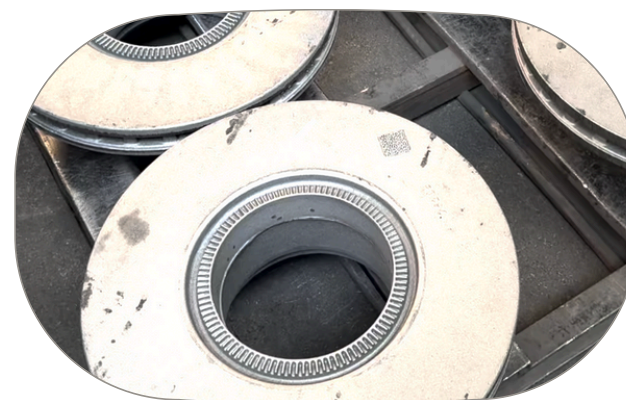
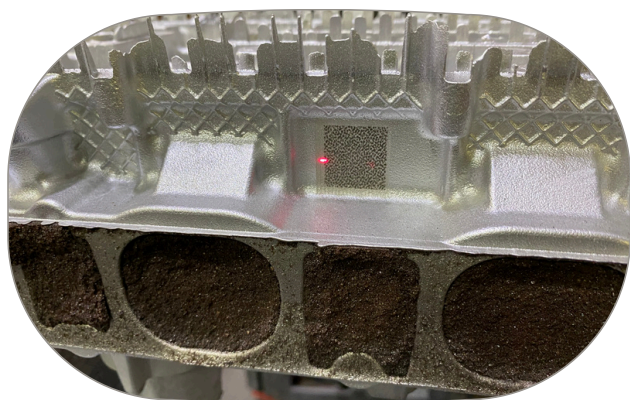
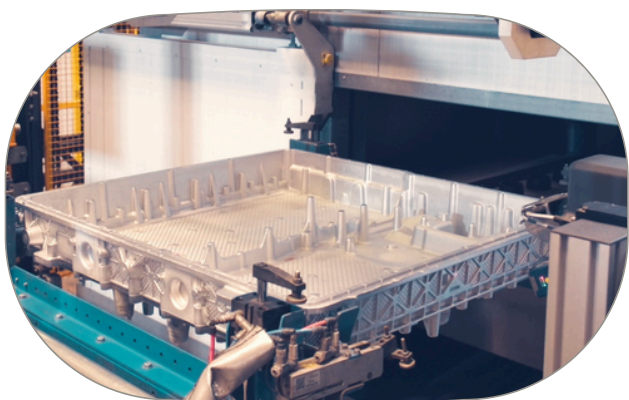
Universal Compatibility

All markers and readers



Works seamlessly with existing laser markers and industrial cameras. No extra equipment needed.

Trusted By Biggest Enterprises



GET IN TOUCH



www.thecosmodot.com



+1 800-532-4610



10685 - B Hazelhurst Dr. #26829 Houston, TX 77043